



# Headteachers Desk Summer 2024

## **The Inclusive School Award**

This term the school was assessed for the Inclusive School Award which is nationally recognised award. During a busy assessment day the assessor looked at our evidence, met with parents, staff and governors and more importantly spoke to the children. She was so impressed with the evidence on the day that we were designated as a Centre of Excellence.

We are so proud of this achievement as we work hard to be a welcoming school where families and children feel supported and know that our mission of being “One Family Living and Learning Together in Faith.” is lived out each day.

## **School Comms App and School Gateway**

As parents know we are moving over to a new communication APP and website called School Gateway. This enables us to streamline our messaging service and payment systems and gives parents increased facilities to pay online for clubs, trips, dinner money etc.

**Please check your emails for information on how to access the new App/website.**

**All parents who have moved over to School Gateway by half term will be entered into a prize draw for a £50 voucher for ASDA. So don't miss out. Any problems, please call into the office and Miss Chute will be happy to help you.**

**Our old ParentAPP will not be used after the 10th June 2024.**

The summer term is a very busy one for all in school. All of the summer term dates are on the school website at [www.oliprimary.co.uk/dates-for-the-summer-term](http://www.oliprimary.co.uk/dates-for-the-summer-term)



## Year 4 curriculum information

### PE /Sports news

We have recently spent our Wednesdays in PE learning key skills in handball and rounders!

This will continue into the summer warm weather as we look forward to a variety of summer events and competitions including rugby, football and our sports day!

**SPORTS DAY YEAR 4**

**23rd May at 1:30pm**



**Class information** – Information regarding first Holy Communion on Friday 24th May has been shared:

**Mr Fairclough's class at 10am, Miss Quinn's at 11am.**

Children are not expected to arrive at school before or after the Mass and we are greatly looking forward to the big day!

If you have any further questions about the day's itinerary please speak to your child's class teacher.

### Curriculum focus

Year 4 has thoroughly enjoyed their recent learning on sound in science and ancient Greece in history. We are planning to complete our own ancient Greek Olympics afternoon shortly!

Next term, we will be learning about such exciting things as electricity, handling emergency situations, 2D and 3D shape and using our 'zones of regulations' lessons to manage our emotions!

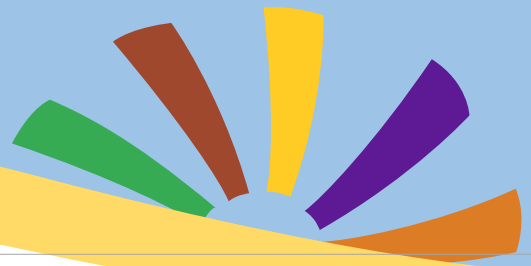
**Homework support:** All year 4 children will complete their times tables check test in school after half-term. It is imperative that they continue to practice their times tables at home to keep their recall of number facts sharp! Each question on the test only gives 6 seconds to answer!

To practice please go to [www.timestables.co.uk](http://www.timestables.co.uk)

Weekly homework based on prior learning will continue to be sent out on Mondays to be returned by the end of the week.

### Reading continues to be a high priority in year 4.

This term we have explored the quality text 'The Journey' and children have had the opportunity to write some amazing diary entries. Next term we will be reading about volcanoes and writing biographies in case you want to read something related for a head start! Please continue to ensure that your child's home reading record is signed each day to maximise their progress in reading.



**Whole School Attendance from  
September to May is**

**94.3%**

Our school target **97%**

**Class attendance from  
1st September to 6th May '24**

**2 Year Old Room-90.7%**

**Nursery AM -93.5%**

**Nursery PM -89.7%**

**Miss Doherty -95.5%**

**Mrs Stalker -94.8%**

**Miss Whittaker -92.6%**

**Mrs Bradley -96.1%**

**Mrs Rimmer -95.6%**

**Mrs Garrity -93.1%**

**Miss Davies -93.2%**

**Miss Gallagher -94.5%**

**Miss Quinn -95.2%**

**Mrs Fairclough -93.7%**

**Miss Clifford -93.%**

**Mrs Bird -95.5%**

**Mr Cotton -94.6%**

**Mrs Coulson -95.1%**



### **WELCOME BACK**

We would like to welcome Mrs Brownbill back to the Lower Key Stage 2 team.

She will be working with small groups of children throughout the summer term

### **Sports day Reminder**

All sports days will be taking place throughout the last week of this term from 20th –23rd May 2024.

This is a change to our normal schedule in an attempt to get better weather.

All the dates for sports day are at the end of this newsletter and on the website under latest news

[www.oliprimary.co.uk/news/](http://www.oliprimary.co.uk/news/)

### **Unacceptable Behaviour**

Most parents and carers are very supportive of the school, its teachers, its pupils and their parents.

**Everyone has the right to feel safe on the school premises.**

As such we expect all adults to behave in a reasonable way towards all members of the school community.

~~Violent or aggressive behaviour of any kind will not be tolerated and action will be taken.~~



# Summer 1 Term Dates 2024

9th May **Y1 Trip to Everton Nature Garden**

13th - 17th May **Y6 SATS Week**

20th May **Upper KS2 Sports Day PM (1:30pm)**

21st May **EYFS Sports Day AM - Rec (GD) plus Morning Nursery & 2YO (9:15am)**  
**EYFS Sports Day PM— Rec (ES) plus Afternoon Nursery & 2YO (2:15pm)**

22nd May **KS1 Sports Day AM Yr1 (9:15am)**

**KS1 Sports Day PM Yr2 (2:15pm)**

23rd May **Lower KS2 Sports Day PM (1:30pm)**

**Please note that sports days are weather dependent and they may be cancelled and rescheduled at short notice**

24th May **First Holy Communions Yr4 (information from Mrs Shepherd)**

**School closes for Half Term at 3:20pm**

## Half Term

10th June **School reopens for Summer Term 2 at 8:45am**