



# Set A

## Test 1: Arithmetic



1.  $12 + 19 =$


Marks

1

2.  $5 \times 8 =$


1

3.  $185 - 37 =$


1

# Set A

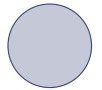
Test 1: Arithmetic



Marks

4.

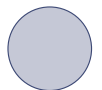
$$654 - \boxed{\phantom{0000}} = 254$$

1

5.

$$70 \div 10 =$$

1



# Set A

Test 1: Arithmetic



10  
MINS

6.  $\frac{2}{9} + \frac{5}{9} =$

Marks

1

7.  $543 + 128 =$

1

8.  $26 \times 2 =$

1

# Set A

Test 1: Arithmetic



10  
MINS

9.

$$580 - 365 =$$


Marks

1

10.

Show  
your  
method

$$\begin{array}{r} 236 \\ \times 4 \\ \hline \end{array}$$


2

Well done! END OF SET A TEST 1!



# Set A

## Test 2: Reasoning



**1. a.** Write each of these numbers in words.

308: \_\_\_\_\_

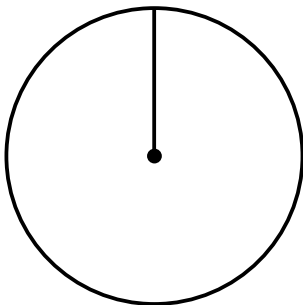
527: \_\_\_\_\_

**b.** Use the two numbers above to complete this number statement.

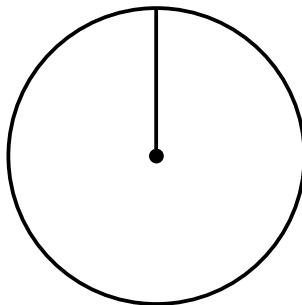
$$\boxed{\phantom{000}} - 219 = \boxed{\phantom{000}}$$

**2.** Use a pencil and a ruler to draw and shade the equivalent fraction of each circle.

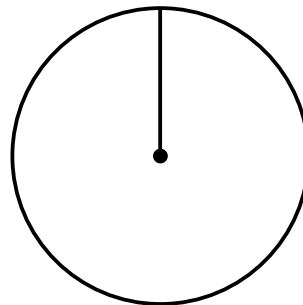
$\frac{1}{4}$



$\frac{1}{2}$



$\frac{3}{4}$



Marks



1



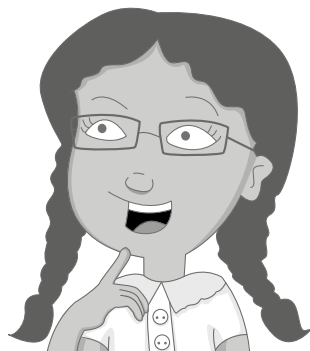
1



1



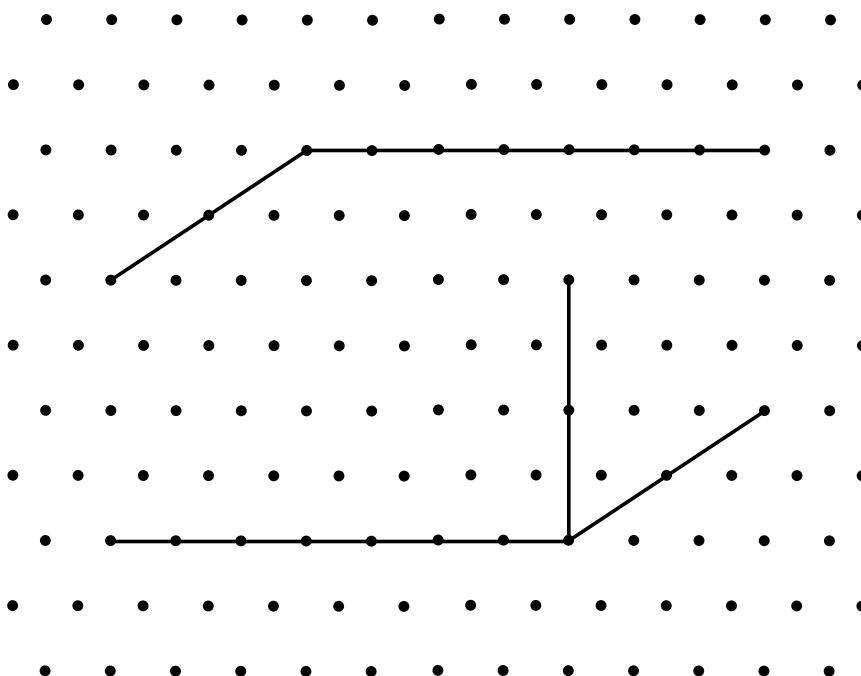
**3. a.** Jenny is thinking of a shape. She says her shape has four equal sides, two obtuse angles and two acute angles.



Name Jenny's shape.

\_\_\_\_\_

**b.** Complete this drawing of a cuboid.



Marks



1



1

4. Write the two missing digits to make this addition correct.

$$\begin{array}{r} 2 \square 5 \\ + \quad 4 \quad 7 \\ \hline 3 \quad 3 \quad \square \end{array}$$

Marks

1

5. Ahmed has £2.



He buys a comic for £1 and some sweets for 40p.  
Circle the correct coins to show the change he should receive.



1

# Test 2: Reasoning



### Marks

Well done! END OF SET A TEST 2!





# Set A

## Test 3: Reasoning



1. Look at each of these fraction sentences.

Write T if it is true or F if it is false. One has been done for you.

$$\frac{1}{2} > \frac{1}{4}$$

$$\frac{2}{6} > \frac{2}{7}$$

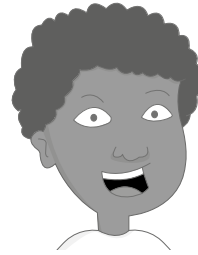
$$\frac{1}{3} < \frac{1}{4}$$

$$\frac{3}{4} > \frac{6}{8}$$

Marks

1

2. Javan says, "If 572 add 327 equals 899, then 899 take away 327 must equal 572."



Explain why he is correct.

---

---

1

Circle the closest estimate to this calculation.

$$136 + 241 + 125$$

400

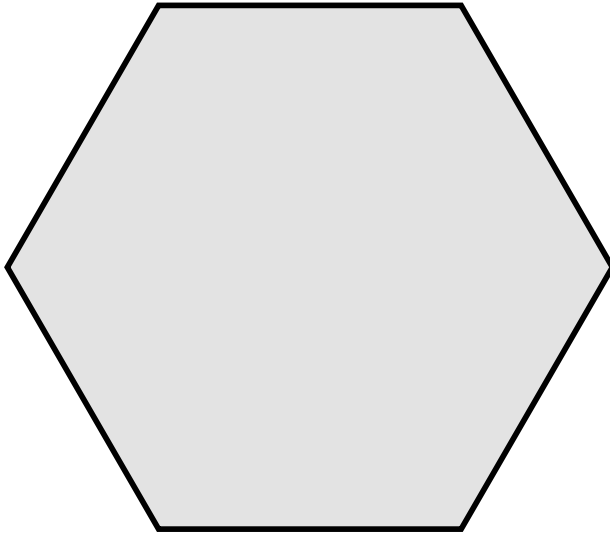
450

500

550


1

3. Use a ruler to find the perimeter of this regular hexagon.



Perimeter =  cm

Marks

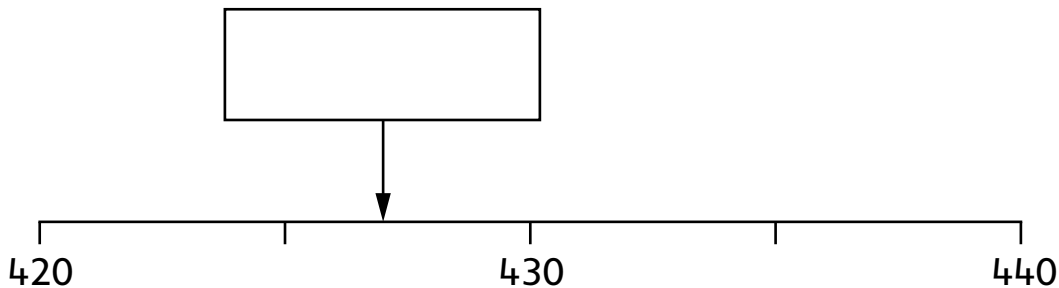
  
1





**4. a.** Use these digits to write the correct missing 3-digit number on the number line.

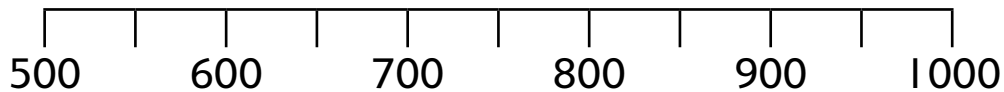
2      4      7



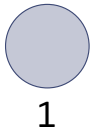
**b.** Find the largest number you can make with these three digits.

5      8      4

Mark it in the correct place on the number line.



Marks



1



1

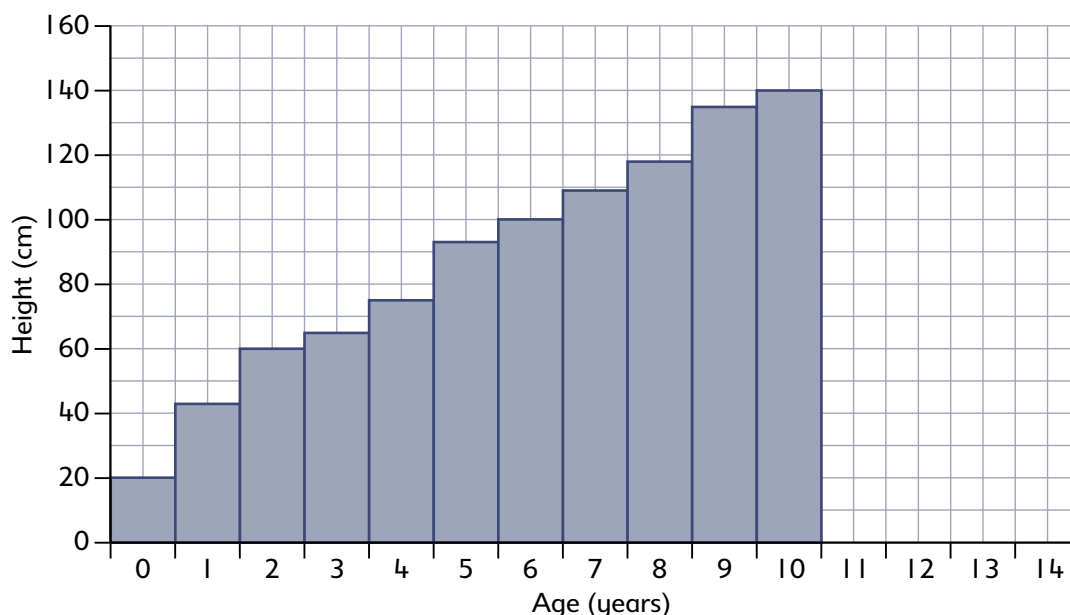
# Set A

## Test 3: Reasoning



10  
MINS

**5.** Tim's mum has measured Tim's height on every birthday since the day he was born.



**a.** On his 10th birthday, how much had Tim grown since he was born?



1

**b.** How tall was Tim on his 6th birthday?



1

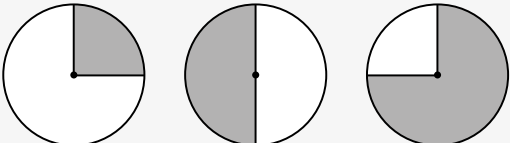
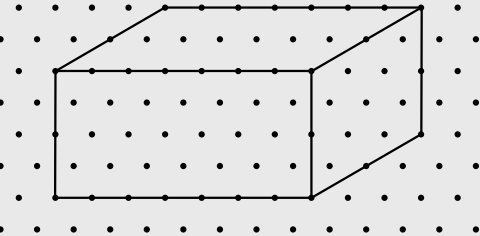
*Well done! END OF SET A TEST 3!*

# Answers

Maths



Q	Mark scheme for Set A Test 1 – Arithmetic	Marks
1	31	1
2	40	1
3	148	1
4	400	1
5	7	1
6	$\frac{7}{9}$	1
7	671	1
8	52	1
9	215	1
10	944 <b>Award 1 mark</b> for the formal written method for multiplication but with one arithmetical error. Do not award any marks if no final answer has been written in the calculation.	2
<b>Total</b>		<b>11</b>

Q	Mark scheme for Set A Test 2 – Reasoning	Marks
1	a. 308: Three hundred and eight 527: Five hundred and twenty-seven b. $527 - 219 = 308$	1
2	 <p>Actual shaded areas may vary, but fractions should be accurate to the nearest two degrees/millimetres.</p>	1
3	<p>a. Rhombus</p> <p>b.</p>  <p>Lines should be accurate to the nearest millimetre.</p>	1
4	$\begin{array}{r} 285 \\ + 47 \\ \hline 332 \end{array}$	1

5		1
6	15 eggs 325g of sugar	1 1
<b>Total</b>		<b>9</b>

Q	Mark scheme for Set A Test 3 – Reasoning	Marks
1	$\frac{1}{3} < \frac{1}{4}$ <b>F</b> $\frac{2}{6} > \frac{2}{7}$ <b>T</b> $\frac{3}{4} > \frac{6}{8}$ <b>F</b>	1
2	The second calculation is an inverse of the first one. <b>Award 1 mark</b> for similar wording, but only if the word 'inverse' is used. 500	1 1
3	24cm	1
4	<b>a.</b> 427 <b>b.</b> 854 <b>Award mark</b> if any indication of this number is shown on the number line, such as a clear cross or arrow just after the 850 mark; the number does not have to be written. Any indication of the number touching, or coming slightly before, 850 should not receive a mark.	1 1
5	100cm OR 1m Only award mark if the units are given. 110cm OR 1.1m Only award mark if the units are given.	1 1
<b>Total</b>		<b>8</b>